

Clearlight®

**AROMAONE®**  
AROMATHERAPY DIFFUSER

OWNER'S MANUAL



01

**INTRODUCTION**

.....02.....

02

**BOX CONTENTS**

.....03.....

03

**PRODUCT  
DIAGRAM**

.....04.....

04

**INSTRUCTIONS  
FOR USE**

.....06.....

05

**WARRANTY  
INFORMATION**

.....10.....

06

**SAFEGUARDS**

.....12.....

# 01

## INTRODUCTION

CONGRATULATIONS ON YOUR NEW CLEARLIGHT® **AROMAONE**® AROMATHERAPY DIFFUSER.

Before using this device, please read the user manual thoroughly for correct usage and operation. Keep this manual for future reference.

The Clearlight® **AROMAONE**® Aromatherapy has been carefully engineered both for effectiveness and safety. Basic safety precautions should always be followed when using any electrical device. Before using this device, please read and follow the SAFEGUARDS section carefully.

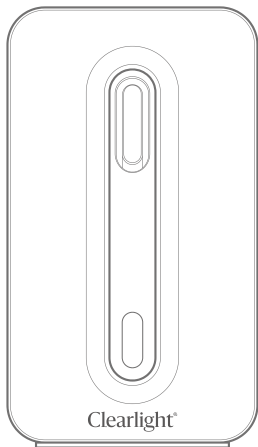
---

Aromatherapy dates back thousands of years. Ancient cultures incorporated aromatic plant components into balms and oils to take advantage of the health benefits. The knowledge of aromatherapy and essential oils began to spread when seafaring merchants exported essential oils around the world making essential oils one of the earliest trade items of ancient times.

Turn any room into your own aromatherapy oasis with the Clearlight® **AROMAONE**® Aromatherapy diffuser. Just add a few drops of your favorite pure essential oil for a fragrant, long lasting mist. Enhance your mood and energy with Aromatherapy.

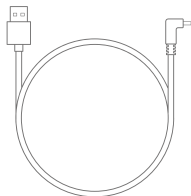
# 02

## BOX CONTENTS



①

**AROMAONE®** Device



②

USB-C Cable

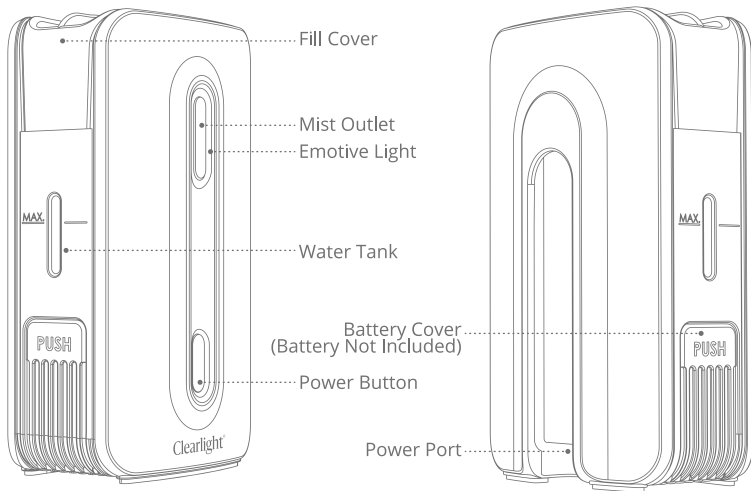


③

Wall Mount & Screws

# 03

## PRODUCT DIAGRAM



## FEATURES

### Ultrasonic Technology

- This diffuser uses ultrasonic, high-frequency technology to convert the water and essential oil into a fine mist that is dispersed into the air evenly, delivering natural aroma to enhance your mood.

### Mood Light

- The gentle glow creates a peaceful environment.

### 2 step fan speed

- user controlled low or high fan speed.

### Runtime

- Up to 4 hours of continuous runtime.

### Automatic Shut-Off Protection

- When the reservoir is empty, the unit will shut off automatically.

### Reservoir Capacity

- 60ml.

### Battery Operation (Battery Not Included)

- The unit can be operated by installing the optional battery (Not included). The unit will run for 2 - 2.5 hours on a full charge.

## SPECIFICATIONS

<b>Power</b>	5V 2A USB-C input
<b>Dimensions</b>	62*100*174 mm
<b>Weight</b>	0.8lbs or 380g
<b>Water tank capacity</b>	60ml
<b>LED</b>	Cyan color Breathing: operating Blinking: empty tank

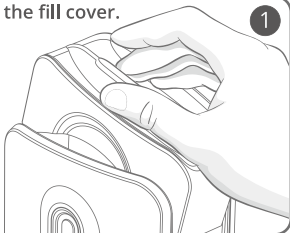
# 04

## INSTRUCTION FOR USE

### Setting up the AROMAONE®

Remove the fill cover.

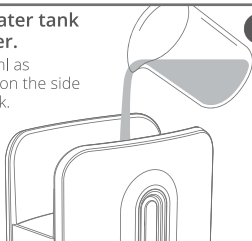
1



Fill the water tank with water.

2

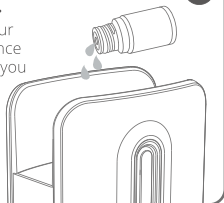
- Up to 60ml as indicated on the side of the tank.



Add 5-7 drops of essential oil to the water.

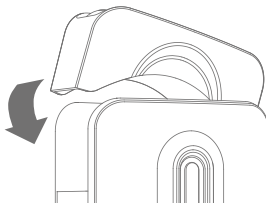
3

- Depending on your personal preference and choice of oil, you may add more or fewer drops of essential oil.



Put the top cover back on.

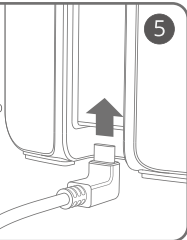
4





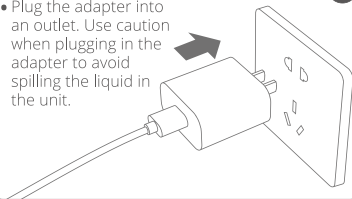
#### Plug in the USB-C Cable.

- Plug the USB-C cable into the diffuser and then plug the cable into a USB-C wall adapter.



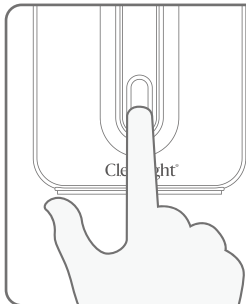
#### Plug the power.

- Plug the adapter into an outlet. Use caution when plugging in the adapter to avoid spilling the liquid in the unit.



---

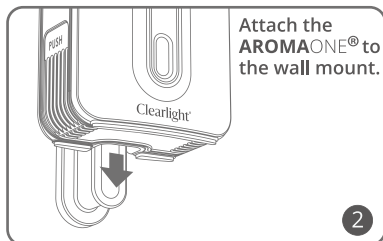
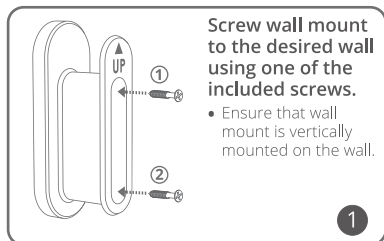
## Operating AROMAONE®



- Press the power button for 3 seconds to turn ON/OFF the **AROMAONE®**.
- When the device is diffusing mist, press the button to toggle the fan speed from LO to HIGH or from HIGH to LO.

**NOTE:** AROMAONE® will power off automatically when the water runs out. Refill the water tank to continue using.

## Wall Mount Installation



---

## CLEANING & MAINTENANCE

- Turn OFF the unit and unplug the cable. Lift off the fill cover.
- Carefully pour any remaining water and essential oil out of the water tank, from the drain side, opposite the air outlet. Be sure not to empty the water tank near the air outlet to avoid malfunction.
- Wipe clean and dry with a clean, soft cloth.
- It is recommended to clean the device every 3 days.
- For the most thorough clean, pour a 50/50 mixture of vinegar and water into the water tank, then soak for 5 minutes. Brush water tank walls, base, and ultrasonic membrane clean with a soft-bristle brush (not included) and rinse. NEVER touch the ultrasonic membrane with your fingers, which may damage the membrane.
- Clean and dry the unit before extended periods of inactivity.

## TROUBLESHOOTING



Problem	Possible Cause	Solution
No Mist	Cable not connected	Plug in the cable and press button
	Water exceeds max level	Dump excessive water so the level is below max level
	Insufficient water	Refill the water tank
	Membrane clogged	Clean the membrane per instructions

### USING ESSENTIAL OIL WITH AROMAONE®



To avoid unnecessary damage to the product, or harm to you or others, please keep the following recommendations in mind and exercise caution when using essential oils:

- DO NOT add excessive amount of essential oil. Avoid spilling essential oil on skin. If you do, immediately dilute it with a carrier oil like coconut oil or olive oil. If swallowed, seek medical help immediately.
- Clean the water tank after each use. Some essential oils are not water-soluble and may remain in the water tank causing residue or an unpleasant odor if mixed with another essential oil.
- Immediately discontinue the use of any essential oil that makes you feel sick or produces an adverse side effect. Pregnant women, elderly people, young children, or people with chronic diseases may be more sensitive to some fragrances.
- Store essential oil in a cool, dry place with the cap tightly closed and out of the reach of children and pets. Observe the expiration date of your essential oil.

# 05 WARRANTY INFORMATION

## LIMITED ONE YEAR WARRANTY

Clearlight® sells its products with the intent that they are free of defects in manufacture and workmanship for a period of one year from the date of original purchase, except as noted below. Clearlight® warrants that its products will be free of defects in material and workmanship under normal use and service. This warranty extends only to consumers and does not extend to Retailers. To obtain warranty service on your Clearlight® product, contact a customer relations representative for assistance. Please make sure to have the model number of the product available.

Clearlight® does not authorize anyone, including, but not limited to Retailers, the subsequent consumer purchaser of the product from a Retailer or remote purchasers, to obligate Clearlight® in any way beyond the terms set forth herein. This warranty does not cover damage caused by misuse or abuse; accident; the attachment of any unauthorized accessory; alteration to the product; improper installation; unauthorized repairs or modifications; improper use of electrical/power supply; loss of power; dropped product; malfunction or damage of an operating part from failure to provide manufacturer's recommended maintenance; transportation damage; theft; neglect; vandalism; or environmental conditions; loss of use during the period the product is at a repair facility or otherwise awaiting parts or repair; or any other conditions whatsoever that are beyond the control of Clearlight®.

This warranty is effective only if the product is purchased and operated in the country in which the product is purchased. A product that requires modifications or adoption to enable it to operate in any other country than the country for which it was designed, manufactured, approved and/or authorized, or repair of products damaged by these modifications is not covered under this warranty.

THE WARRANTY PROVIDED HEREIN SHALL BE THE SOLE AND EXCLUSIVE WARRANTY. THERE SHALL BE NO OTHER WARRANTIES EXPRESS OR IMPLIED INCLUDING ANY IMPLIED WARRANTY OF MERCHANTABILITY OR FITNESS OR ANY OTHER OBLIGATION ON THE PART OF THE COMPANY WITH RESPECT TO PRODUCTS COVERED BY THIS WARRANTY. CLEARLIGHT® SHALL HAVE NO LIABILITY FOR ANY INCIDENTAL, CONSEQUENTIAL OR SPECIAL DAMAGES. IN NO EVENT SHALL THIS WARRANTY REQUIRE MORE THAN THE REPAIR OR REPLACEMENT OF ANY PART OR PARTS WHICH ARE FOUND TO BE DEFECTIVE WITHIN THE EFFECTIVE PERIOD OF THE WARRANTY. NO REFUNDS WILL BE GIVEN. IF REPLACEMENT PARTS FOR DEFECTIVE MATERIALS ARE NOT AVAILABLE, CLEARLIGHT® RESERVES THE RIGHT TO MAKE PRODUCT SUBSTITUTIONS IN LIEU OF REPAIR OR REPLACEMENT.

This warranty does not extend to the purchase of opened, used, repaired, repackaged and/or resealed products, including but not limited to sale of such products on Internet auction sites and/or sales of such products by surplus or bulk resellers. Any and all warranties or guarantees shall immediately cease and terminate as to any products or parts thereof which are repaired, replaced, altered, or modified, without the prior express and written consent of Clearlight®.

This warranty provides you with specific legal rights. You may have additional rights which may vary from country to country. Because of individual country regulations, some of the above limitations and exclusions may not apply to you.

For more information regarding our product line, please visit: [www.infraredsauna.com](http://www.infraredsauna.com).

## **WARRANTY SERVICE**

Contact Information:

Please visit [service.infraredsauna.com](http://service.infraredsauna.com) for online troubleshooting information or call Clearlight® at +1-510-601-1775.

# 06

## SAFEGUARDS

- This product can be used by children age 8 years and older and persons with reduced physical, sensory, or mental capabilities or lack of experience and knowledge if they have been given supervision or instruction concerning use of the product in a safe way and understand the hazards involved. Children shall not play with the product. Cleaning and user maintenance shall not be made by children without supervision.
- Be sure to turn off the product and disconnect the USB cable before cleaning. Close the water tank cap tightly after each refill to prevent leaks and to ensure proper mist output.
- Keep **AROMAONE®** out of reach of children and pets.
- Always place diffuser on a firm, flat surface. Never place it on a rug, carpet, or on a finished floor that may be damaged by exposure to water or moisture.
- Place the product in a clear space that allows the mist to flow freely away from appliances that are sensitive to water.
- Always empty water and clean the water tank when the product is not in use.
- Never open or move the product while it is running.
- Avoid adding too many drops of essential oil.
- DO NOT attempt to disassemble or modify the product in any way. Doing so could result in electric shock and serious injury.
- Refill and clean the tank regularly for optimal performance.
- Unplug the product during filling and cleaning.



# FCC NOTICE

Model: **AROMAONE**® aroma diffuser (ARO-1)  
Clearlight®  
1077 Eastshore Hwy • Berkeley, CA 94710

---

## **This device complies with part 18 of the FCC Rules.**

This equipment generates, uses and can radiate radio frequency energy and, if not installed and used in accordance with the instructions, may cause harmful interference to radio communications. The equipment should be maintained as discussed in this manual. Changes or modifications not expressly approved by Pure Enrichment will void the user's authority to operate the equipment. If this equipment does cause harmful interference to radio or television reception, which can be determined by turning the equipment off and on, the user is encouraged to try to correct the interference by one or more of the following measures:

- Reorient or relocate the receiving antenna.
- Increase the separation between the equipment and receiver.
- Connect the equipment into an outlet on a circuit different from that to which the receiver is connected.
- Consult the dealer or an experienced radio/TV technician for help



Clearlight®